

# WACOM: CONNECTING THE CINTIQ DISPLAY 16 TO YOUR LAPTOP/COMPUTER

Faculty

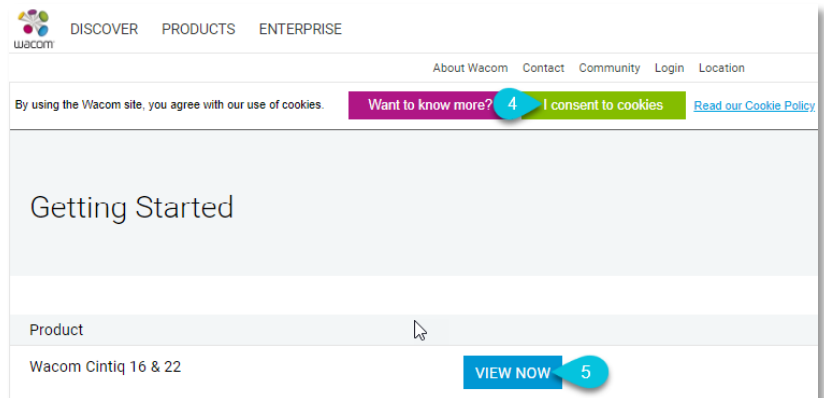
## GET STARTED

1. Wacom display
2. Power Cable
3. **USB and HDMI**

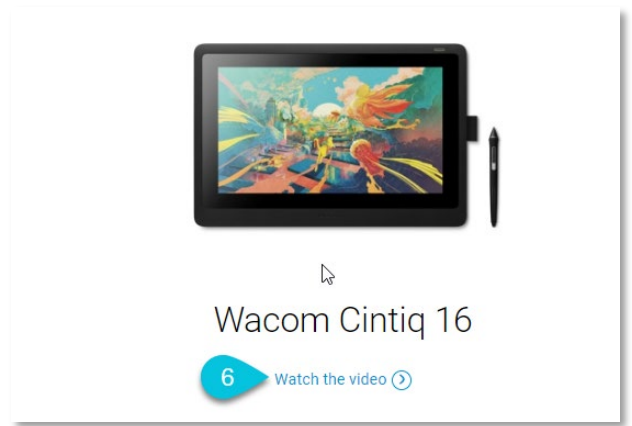


## CONNECT THE WACOM DISPLAY

4. Go to [wacom.com/start](https://wacom.com/start) and select **I Consent to Cookies**
5. Scroll to **Wacom Cintiq 16 & 22** & Select **View Now**



6. Watch the short **Video** and follow instructions for connecting your Wacom Cintiq to power



## DOWNLOAD THE WACOM DISPLAY SOFTWARE

7. Select your **operating system** (Mac or Windows). Download and follow instructions to setup

A screenshot of the Wacom software download page. It features two product images at the top: Wacom Cintiq 16 and Wacom Cintiq 22, each with a 'Watch the video' link. Below these are three circular icons representing the installation steps: Step 1 (operating system icons), Step 2 (cable and power icons), and Step 3 (a stylus icon). Each step has a corresponding title and description. Step 1 includes a link for 'Mac | Windows'. Step 2 includes a footnote: '\*Cintiq 22 comes with HDMI, USB and power cables.'

Wacom Cintiq 16 [Watch the video](#)

Wacom Cintiq 22 [Watch the video](#)

**7** Step 1  
Download and install the driver.  
[Mac | Windows](#)

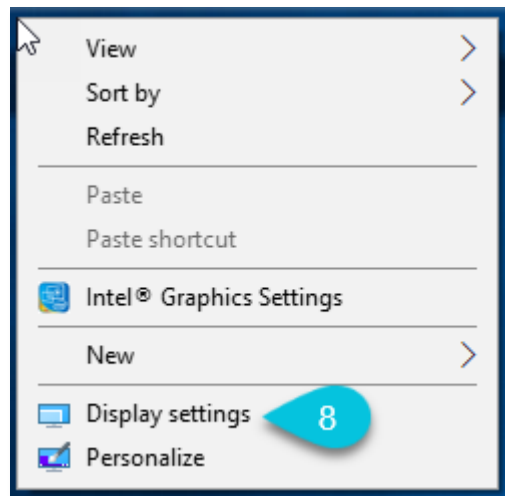
Step 2  
Connect Wacom Cintiq to power and your PC or Mac using the 3-in-1 cable\*.

Step 3  
Follow the instructions of the Setup Wizard and you are ready to go.

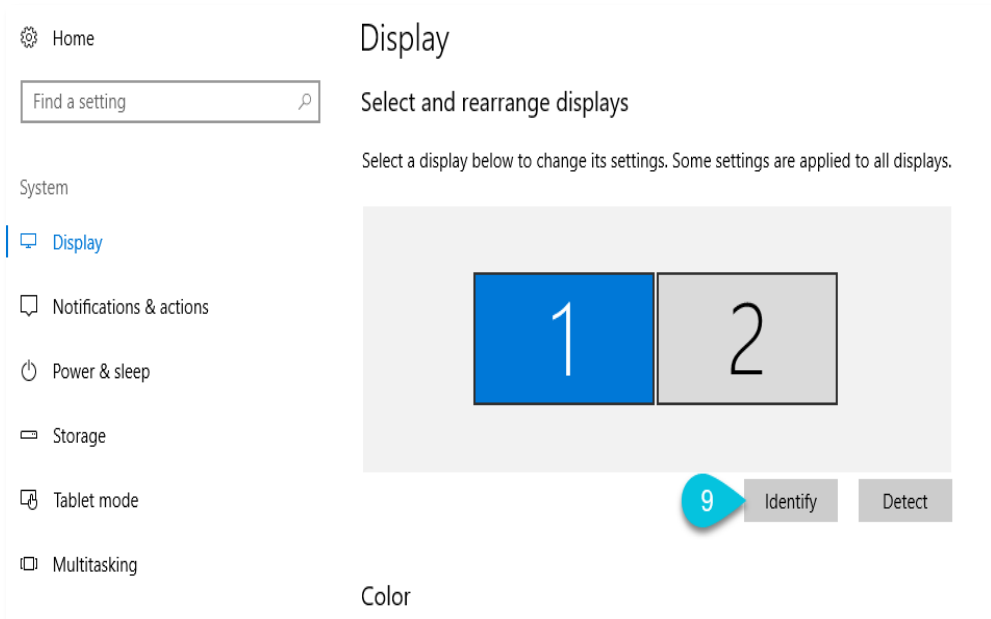
\*Cintiq 22 comes with HDMI, USB and power cables.

## CONFIGURE THE WACOM DISPLAY WITH YOUR LAPTOP/COMPUTER

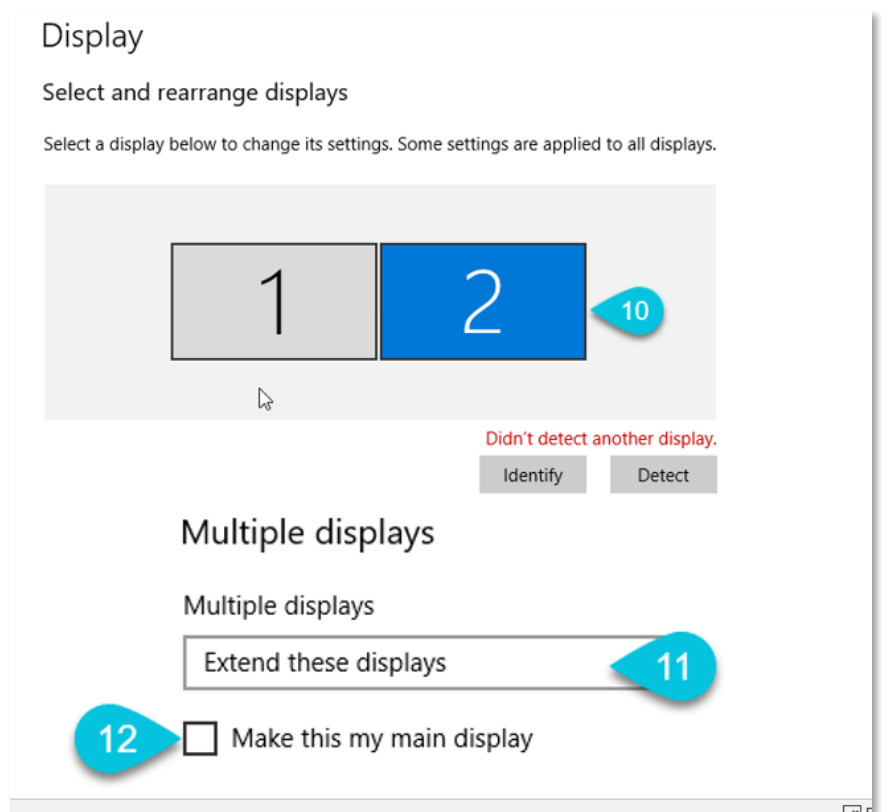
8. Right click **Desktop**, select **Display settings**



9. Press **Identify** to figure out which **monitor** is the CINTIQ (**1 or 2**)

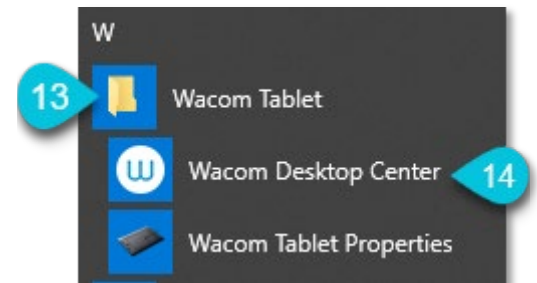


10. Select the **monitor-number** that represents the Cintiq on your laptop/computer (1 or 2)
11. Select **Extend desktop to this display**
12. Select **Make this my main display**

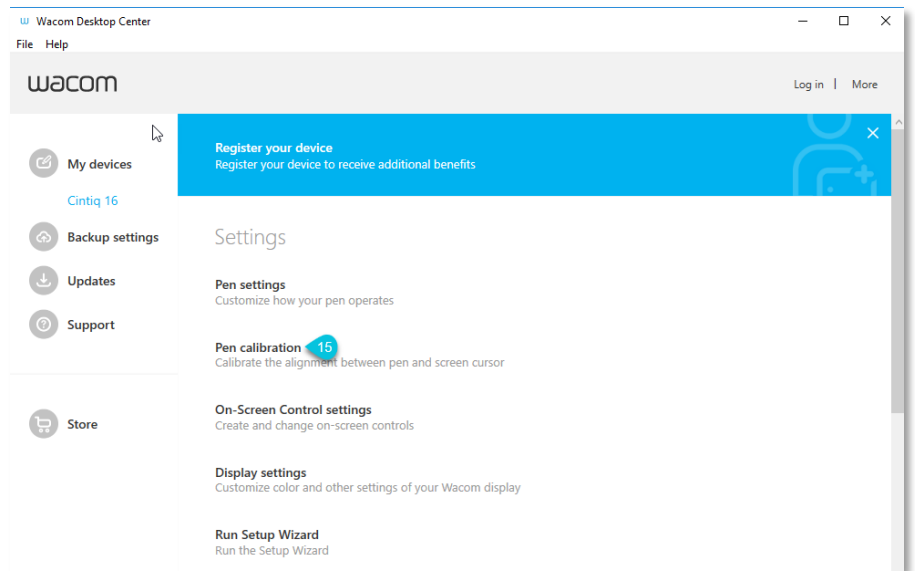


## CALIBRATE THE CINTIQ PEN

13. Using the Windows Start Menu, open **Wacom Tablet folder**
14. Open **Wacom Desktop Center**

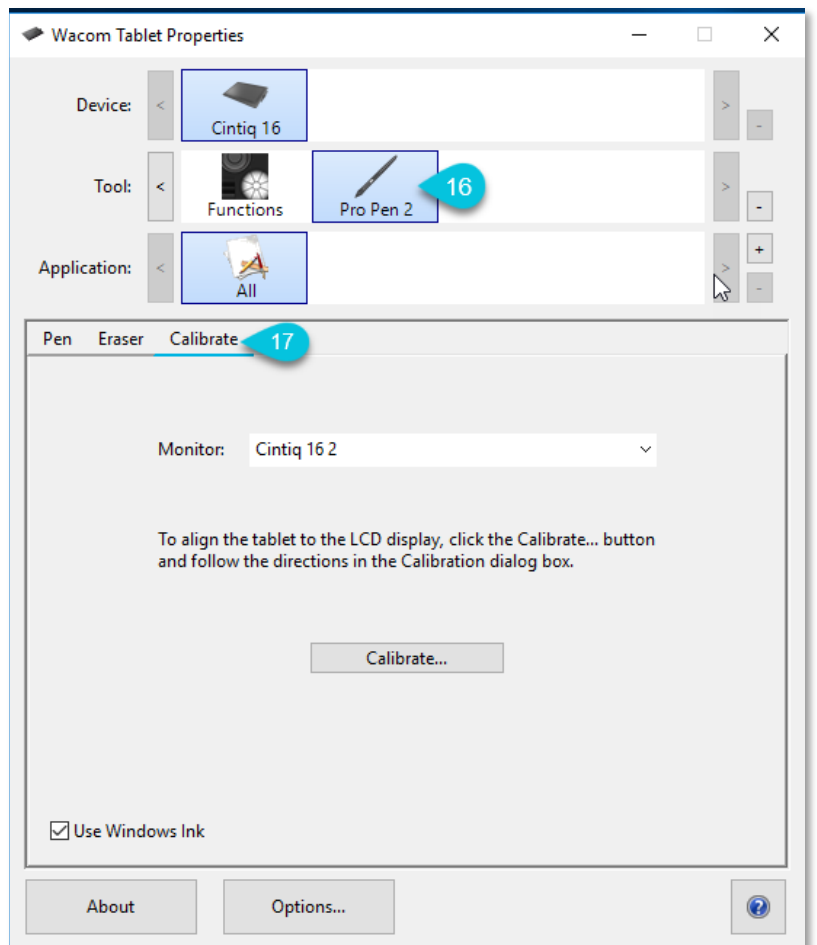


## 15. Select Pen Calibration



## 16. Select Pro Pen 2

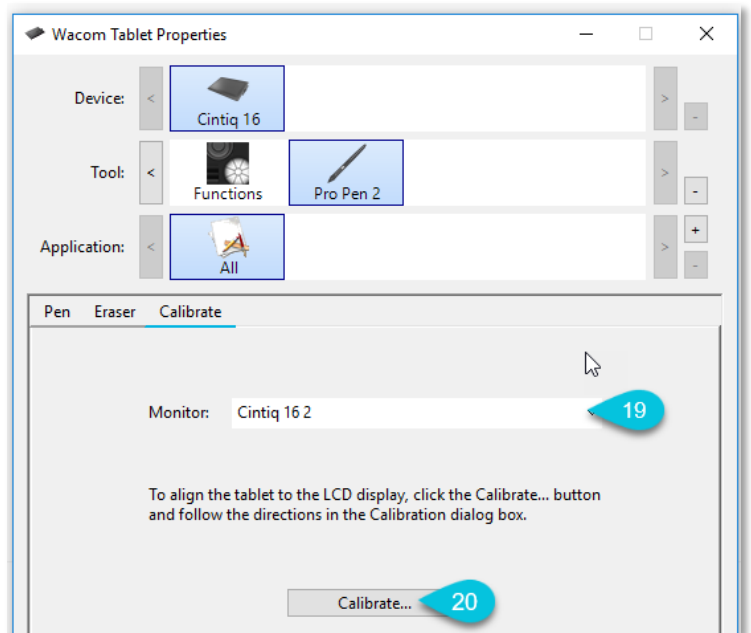
## 17. Select Calibrate Tab



18. Select **Cintiq monitor**

19. Press **Calibrate**

- a. Follow **onscreen instructions** and complete calibration
- b. Close **Wacom Tablet properties window**



Now you're ready to use the Wacom.

- Open up a PowerPoint presentation, start a slide show, and use your pen to annotate.
- If you prefer, open up a blank PowerPoint presentation and create your lecture from scratch. Write, draw, etc...

## ADDITIONAL VIDEOS

- [Wacom Cintiq Display 16: Setting up your Wacom Pro Pen 2 Settings](#) 1 minute
- [Wacom Cintiq Display 16: Working with Pro Pen 2](#) 1 minute
- [Wacom Cintiq Display 16: Using Onscreen Controls](#) 1 minute