

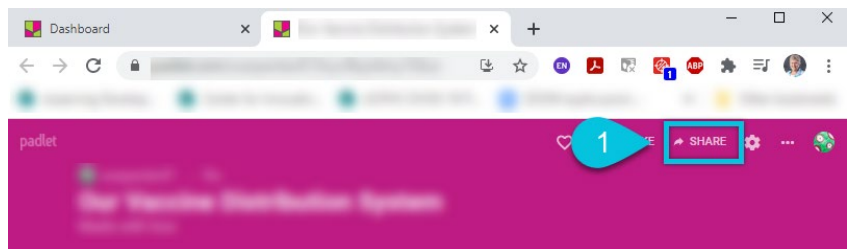
PADLET: PADLET PRIVACY

Faculty, Staff, and Students

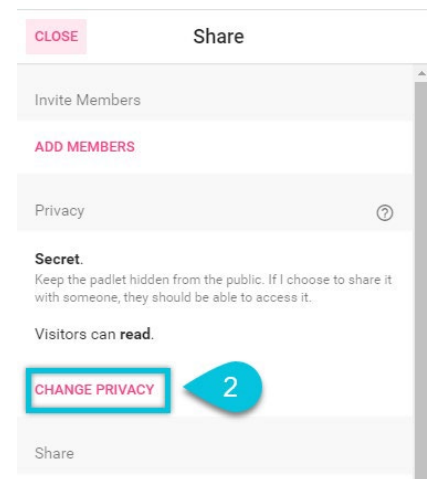
When you create a Padlet, you can choose appropriate privacy settings including who can see your Padlet on the internet and how visitors can interact with your Padlet.

SETTING PRIVACY SETTINGS FOR PADLET AND VISITORS

1. SELECT **Share**.

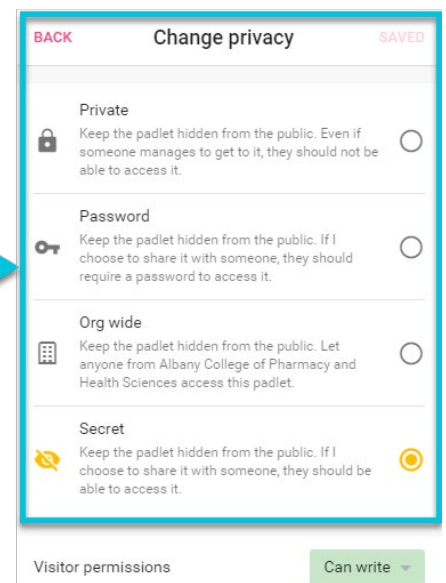


2. SELECT **Change Privacy**.

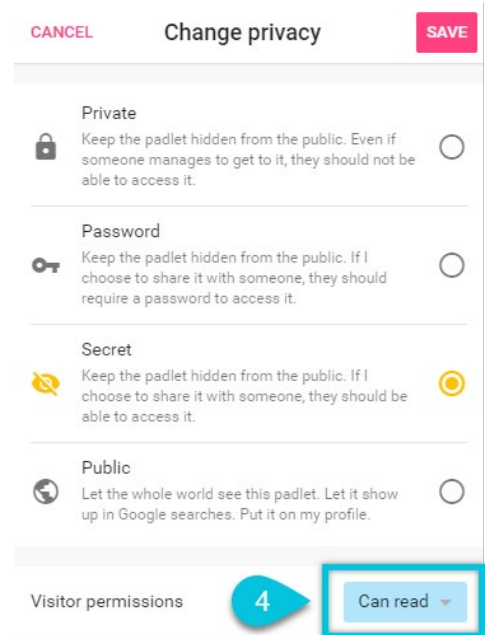


3. SELECT appropriate **privacy setting**.

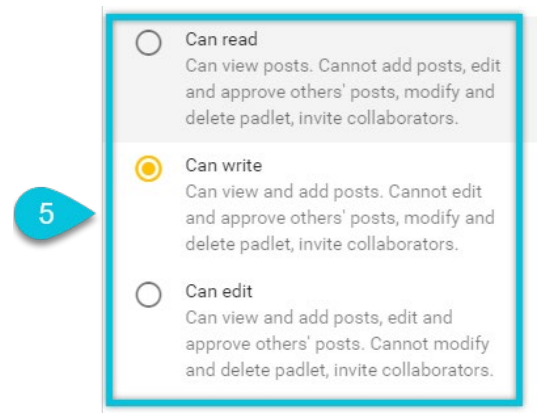
Note: If you select **Org wide**, your Padlet will be shared with all ACPHS account holders (instructors, students, staff) and will appear in their Padlet accounts. Please limit use of **Org wide** sharing.



4. SELECT **Visitor permissions** menu.



5. SELECT **appropriate Visitor permission**.
CLICK **anywhere** to return to the settings menu.



6. SELECT **Save** to save settings.

